

PT - 1 Pressure Transmitter



ORDERING CODE						
TYPE	FAMILY	DIN PLUG	TRANSDUCER RANGE	RANGE TYPE	FITTING	CUSTOMER BRANDING
PT	2	X	0010	V	01	R01

Features

- Accuracy 0.5%FS (including linearity and repeatability).
- Transducer rated at 50 million cycles.
- Metalwork made of Type 316 Stainless Steel.
- Protected against reverse voltage and overvoltage.
- Protected against noise on the supply line.
- Wide supply range, 8 to 38V DC.
- Transducer is temperature compensated by means of laser-trimmed resistors.
- Operating temperature range from 0°C to +85°C.

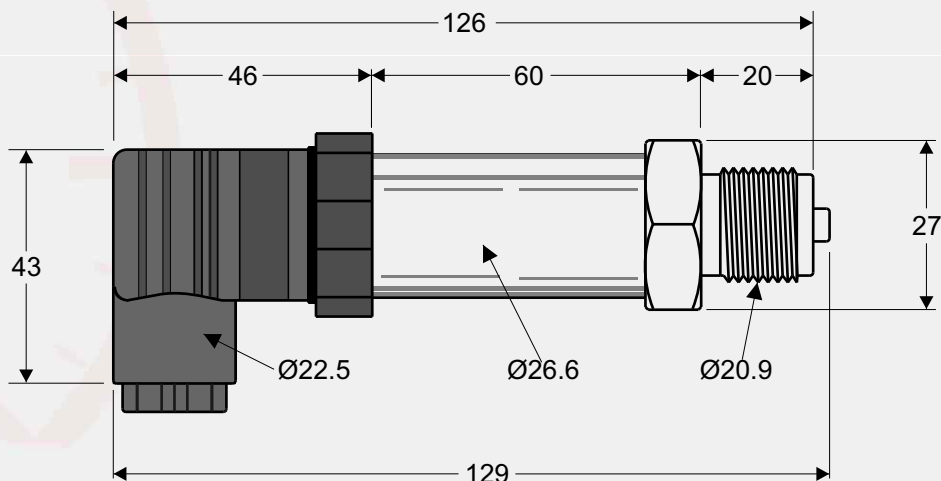
Application Examples

- Monitoring product, process and hydraulic pressure and triggering safety shutdowns when hazardous conditions are detected.
- **Mining Industries** - Monitoring of hydraulic pit props to indicate condition of the prop and ground strata.
- Monitoring of hydraulic pressure on cutting machinery using hydraulic systems.
- **Oil Rigs** - Monitoring ballast tank levels and hydraulic pressure on jack-up drilling rigs.
- Monitoring pressure on platform flowlines.
- Monitoring pressure on additive metering pumps.
- Monitoring pressure on sub-sea injection valves / well cleanouts.
- **Refrigeration** - Monitoring compressor pressure of both low and high pressure sides.
- **Heavy Industry** - Modern industrial gas turbines use pressure transmitters for control and automatic start-up.
- **Electrical Industry** - Monitoring of steam pressures and distributions pressures within the generating station. Oil and nitrogen gas cooled systems are used on high voltage three phase cables. Local and telemetry monitoring of the coolant pressures are often required.

Description of Operation

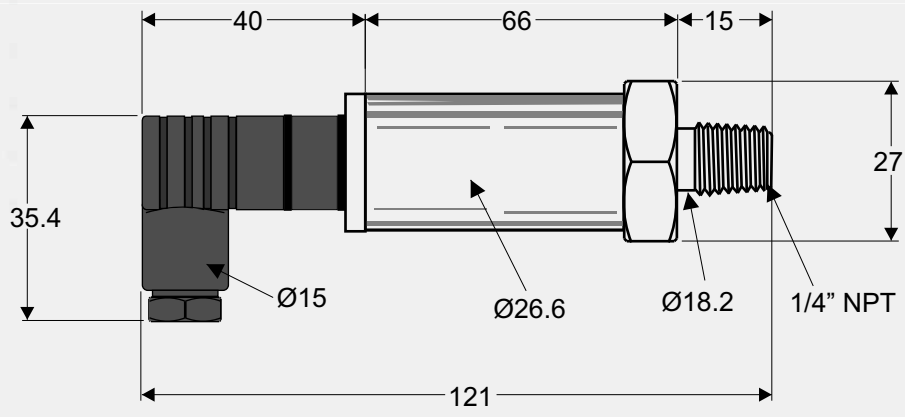
The PT-Line PT-2 units are a range of precision 3-wire pressure transmitters. These units are factory calibrated as per customer specification for offset and span (e.g. 0-10V, 1-10V). If necessary, the units can be calibrated in the field (see figure 1). Pressure Ranges are from vacuum (-1 Bar) to 600 Bar.

Dimensional Diagram (Maxi)



NOTE: All measurements in mm

Dimensional Diagram (Mini)



NOTE: All measurements in mm

Description of Controls

Connect as shown below and carefully remove the electrical connector, exposing the controls.

VR1: Set pressure to 0 Bar. Adjust for low voltage (e.g. 0V, 1V). Turning the control clockwise increases the reading and counterclockwise reduces the reading.

VR2: Set pressure to Full Scale. Adjust for high voltage (e.g. 5V, 10V). Turning the control clockwise reduces the reading and counterclockwise increases the reading.

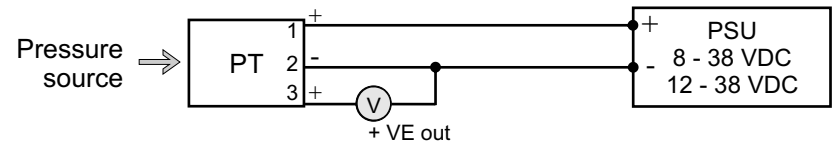
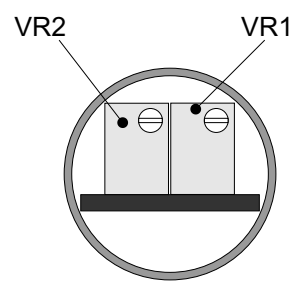


Figure 1

Note: Precision of calibration is determined by the accuracy of the pressure source and accuracy of the voltmeter.

Wiring and Connection

